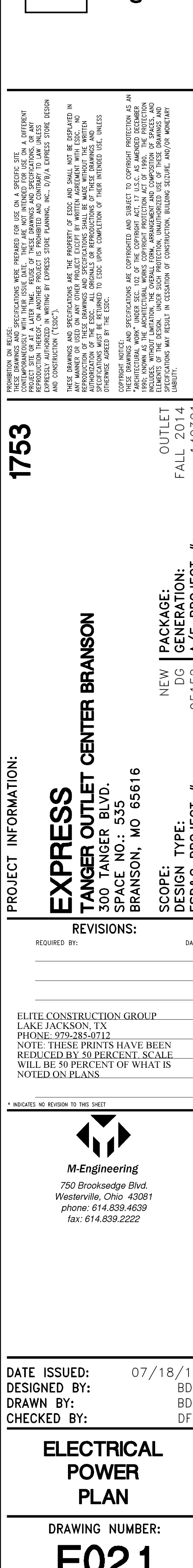


- RECEPTACLE AND COVERPLATES FOR WALLKIES SHALL BE WHITE IN COLOR. REFER TO DETAIL D/042 FOR MOUNTING.
- GFI DUPLEX RECEPTACLE, COVERPLATE, WIRE, CONDUIT, CIRCUIT BREAKER, ETC. FOR RESTROOM IS EXISTING TO REMAIN.
- ELECTRIC WATER COOLER GFI RECEPTACLE AND COVERPLATE SHALL BE WHITE IN COLOR. MOUNT AT 48" A.F.F.
- 30 AMP, 250 VOLT, 3 PHASE THIST-LOCK RECEPTACLE AND STAINLESS STEEL COVERPLATE FOR DREAMSTEAMER.
- TELEPHONE OUTLET IN WALL SHALL BE THE COLOR AS DESIGNATED IN THE SPECIFICATIONS. INSTALL EMPTY 3/4" CONDUIT, WITH PULLNIRE, BACK TO IT SECTION OF ITS ENCLOSURE. TELEPHONE WIRE AND RJ45JACK FOR TWO LINE TELEPHONE BY OTHERS. MOUNT AS NOTED ON PLANS AND DETAILS.
- SEAL SYSTEM. FURNISH AND INSTALL ALL CONDUITS AND PERFORM ALL WORK AS INDICATED IN THE DETAIL.
- FURNISH AND INSTALL A 3/4" CONDUIT WITH PULLNIRE FROM HVAC SECTION OF ITS ENCLOSURE, UP TO UNIT IT SERVES. COORDINATE EXACT REQUIREMENT TO THE CONTRACTOR.
- ITS ENCLOSURE, ALL CONDUITS STUBBED INTO ITS ENCLOSURE SHALL BE INSTALLED IN A CLEAN AND NEAT MANNER. ANCHOR ITS ENCLOSURE ACCORDING TO MANUFACTURERS SPECIFICATIONS AND LOCAL CODES IN SEISMIC AREAS. REFER TO SPECIFICATIONS AND E05.1 FOR MORE INFORMATION.
- EXTEND 1" TELEPHONE CONDUIT FROM SERVICE ENTRANCE AT DEMISING WALL TO DEMARG ON TELEPHONE BOARD.
- REGISTER CASHWRAP/BACKWRAP COUNTER. PERFORM ALL WORK AS INDICATED IN THE DETAIL.
- SAW CUT/CORE DRILL FLOOR SLAB FOR UNDERSLAB CONDUIT, PATCH AS REQUIRED. COORDINATE WITH LANDLORD.
- REGISTER (POS) SHALL SHARE A 20 AMP, 120 VOLT DEDICATED CIRCUIT AND UTILITY POWER (UP) SHALL SHARE A 20 AMP, 120 VOLT CIRCUIT. STUB UP 1/2" CONDUIT FROM REGISTER TO SUBPANEL. CUT AND PATCH FLOOR AS REQUIRED TO ROUTE CONDUIT TO WALL AS SHOWN. ROUTE UP INSIDE WALL TO CEILING SPACE AND CONNECT TO PANEL LOCATED INSIDE ITS ENCLOSURE. REFER TO POWER PLAN AND PANEL SCHEDULES FOR CIRCUIT DESIGNATIONS.
- DATA OUTLET LOCATED AT EACH REGISTER IN CASHWRAP. CAT 6 CABLE AND RJ45JACK. STUB UP 1" CONDUIT 1" A.F.F. WHERE SHOWN ON DETAIL. INSTALL 1/2" CONDUIT FROM REGISTER TO SUBPANEL. CUT AND PATCH FLOOR AS REQUIRED TO ROUTE CONDUIT TO WALL AS SHOWN. ROUTE UP INSIDE WALL TO CEILING SPACE AND CONNECT TO L.V. SECTION OF THE IFS. WIRE FOR DATA LINES TO BE PULLED AND CONNECTED BY P.O.S. CONTRACTOR.
- TELEPHONE OUTLET BEHIND CURTAIN ABOVE BACKWRAP. TELEPHONE WIRE AND RJ45JACK BY OTHERS.
- ALARM BOX, J-BOX AND 1" CONDUIT STUBBED UP AND OUT OF WALL, OPEN CEILINGS, INSTALL BOX 12" ABOVE TRACK LIGHTING SYSTEM. HARD CEILING, INSTALL BOX 6" BELOW CEILING BY ELECTRICAL CONTRACTOR. CABLE AND ALARM BOX RECEPTACLE BY OTHERS. REFER TO POWER PLANS FOR LOCATION, COORDINATE WITH THE CONTRACTOR.
- CHECKPOINT WIRE-EAS SYSTEM CONTRACTOR TO FURNISH AND INSTALL 120V, DUPLEX RECEPTACLE AND RJ45 ETHERNET JACK TIED INTO STORE NETWORK SYSTEM. FIELD VERIFY LOCATION ON SITE, COORDINATE CHECKPOINT SYSTEM FREQUENCY WITH ADJACENT TENANT SECURITY SYSTEMS TO AVOID INTERFERENCE. REFER TO MANUFACTURER DETAILS FOR ELECTRICAL CONTRACTORS RESPONSIBILITIES. FOR ELEMUM CEILING ONLY. ELECTRICAL CONTRACTOR SHALL INSTALL 1/2" 120V, CIRCUIT AND HARDWIRED KIT (SUPPLIED BY CHECKPOINT) FOR POWER SUPPLY, E.G. RESPONSIBLE FOR ALL 120V CONNECTIONS.

- EXPRESS**  
EXPRESS FASHION OPERATIONS, LLC  
11/a STORE DESIGN & CONSTRUCTION  
1 Express Drive Columbus, Ohio 43230  
Telephone 614.474.4001  
Express.com

10



DRAWING NUMBER:

## E02.1

DRAWING NUMBER:

E021

## E02.1

---